

YXC[®] DIP Seam Tuning Fork 2.5 x6.0 mm YT-26FA Series



Features

- Excellent shock resistance
- Reflow Capable
- Low cost for consumer applications
- IR reflow capable

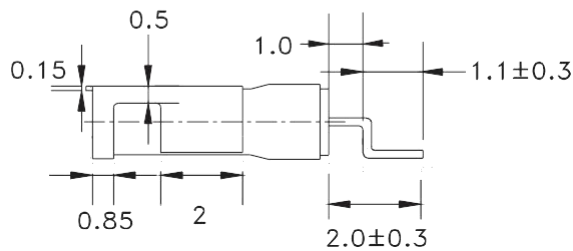
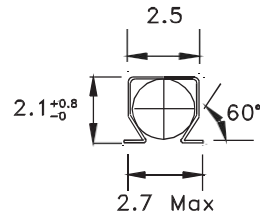
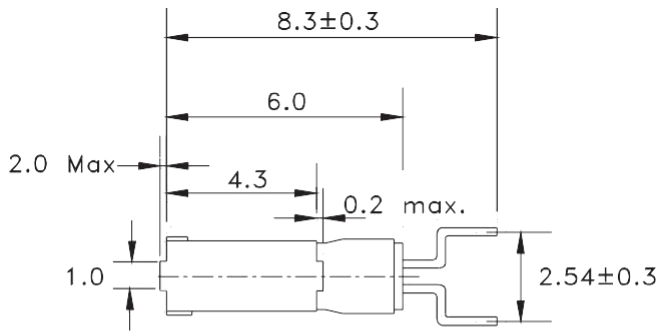
Applications

- Real time clock
- Measuring instruments
- Blue-tooth and wireless applications

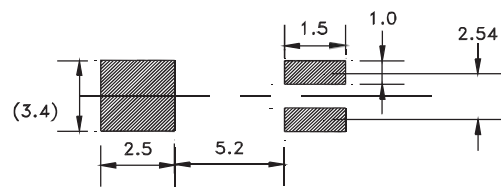
Electrical Specifications

Item / Type	YT-26FA
Frequency Range	32.768 KHz
Vibration Mode	AT Fundamental
Load Capacitance	7,12.5pF . or specify
Frequency Tolerance (at 25 °C)	± 10 ppm, ± 20 ppm, or specify
Frequency Stability Overall	± 30 ppm . or specify
Operating Temperature Range	-40~+85 °C , or specify
Storage Temperature Range	-55~+125°C , or specify
Turn-over Temperature	25°C to ± 5°C
Frequency Stability	-0.034 ± 0.006ppm/ °C
Shunt Capacitance (C0)	1.1pF Max
Drive Level	1 ~ 100 μ W (1.0 μ W Tvp)
Equivalent Series Resistance	40kohms Max
Insulation Resistance	More Than 500MΩ at DC 100V
Quality Fevel	70.000typ
Aging (at 25 °C)	3ppm / year Max

Dimensions



Recommended Land Pattern





★ PART NUMBER GUIDE

e.g. X2060FA327 68 K G D2SI

YT-26FA=2.5×6.0 SMD SEAMTYPE

Quartz Crystal Resonator	Dimensions	Frequency (Hz)	Load Capacitance (Pf)	Frequency Stability Overall (ppm)	Pin	Material	Operating Temp. Range
X	2060FA	32768K	G	D	2	S	I

Definition	Description
Operating Temperature Range	C: -20~+70℃
	I: -40~+85℃

★ REFLOW SOLDERING PROFILE

