

CRYSTAL UNIT

AEC-Q200

YSX1612SC Small Size



Applications

- GPS Automotive electronics
- Industrial electronics.

Features

- Dimensions: 1.60 x 1.20 x 0.35 mm.
- Standard Frequency: 24~60MHz
- AEC-Q200 qualified
- Seam with vacuum Sealed for Ultra-small size

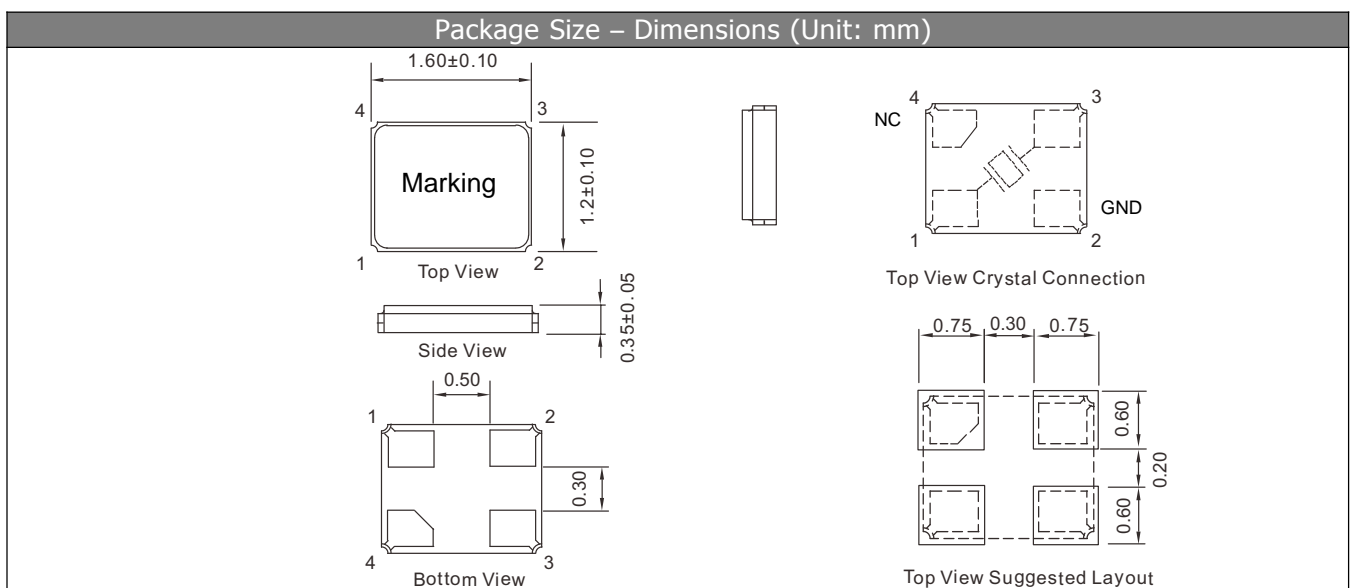
Specifications

| | |
|--|----------------------------|
| Standard Frequency | 24~60 MHz |
| Vibration Mode | AT Fundamental |
| Load Capacitance | 8pF, 9pF, 12pF, or specify |
| Frequency Tolerance (at 25 °C) | ±10ppm, ±30ppm, or specify |
| Frequency Versus Temperature Characteristics | ±50ppm, or specify |
| Operating Temperature | -40~+125°C, or specify |
| Storage Temperature | -55~+125°C, or specify |
| Shunt Capacitance | 3 pF Max. |
| Level of Drive | 50 μW Max. |
| Aging (at 25 °C) | ±2ppm/year Max. |

Equivalent Series Resistance(ESR)

| Fundamental | |
|-------------|------------|
| 24 ~ 40 MHz | 150 Ω Max. |
| 41 ~ 60 MHz | 100 Ω Max. |

Dimensions and Patterns [unit:mm]



CRYSTAL UNIT

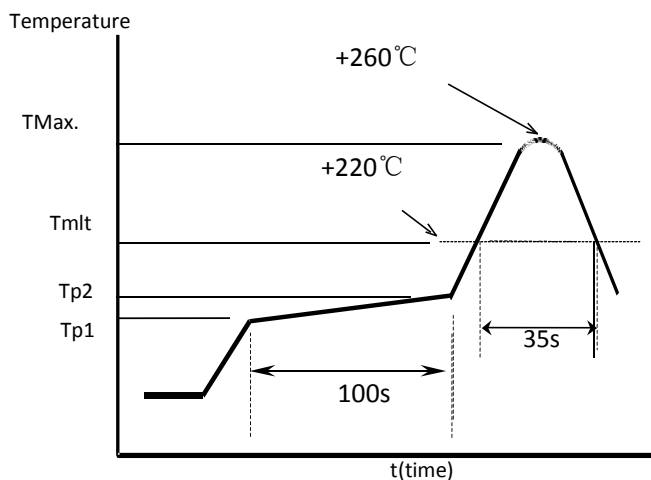
AEC-Q200

YSX1612SC *Small Size*

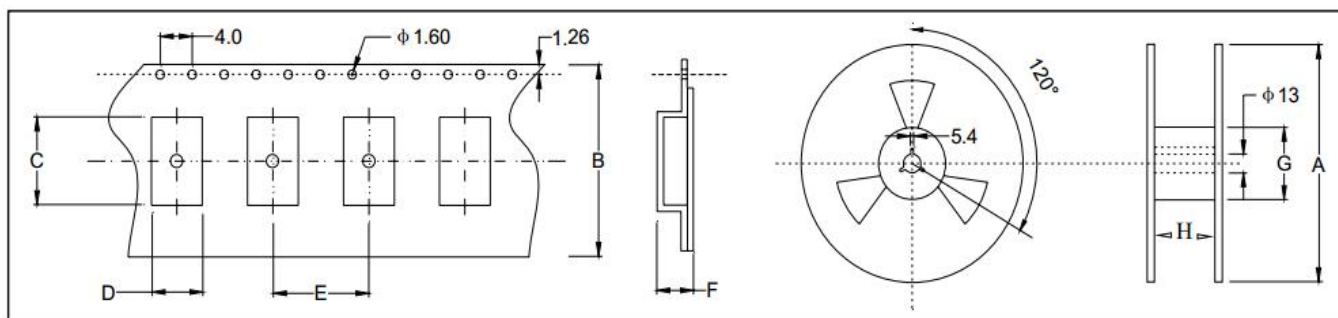


Reflow Soldering Profile

Pre Heating Temperature
 Tp1 ~ Tp2 = + 170 °C
 Heating Temperature
 TMI = + 220 °C
 Peak Temperature
 TMax. = + 260 °C
 Point of measuring
 In case of Solder ability
 Terminal.
 In case of Resistance to soldering heat
 Surface.



Taping Specification(Unit: mm)



| Size | A | B | C | D | E | F | G | H |
|----------|---------|---------|----------|----------|---------|----------|----------|---------|
| SMD-1612 | 180±2.0 | 8.0±0.3 | 1.85±0.1 | 1.45±0.1 | 4.0±0.1 | 0.45±0.1 | 61.0±1.0 | 8.0±1.0 |

3000 pcs per reel